

TF-QE1

——User manual

Catalog

1 Product overview.....	2
1.1 Function description.....	3
1.2 Control card size.....	3
2 Hardware description.....	4
3 Communication interface instruction.....	5
3.1 Lanport instruction.....	5
4 Operate steps.....	6
4.1 The first method: Using Gigabit switches or routers.....	6
4.2 The Second method: Use the U-disk to change content.....	12
4.3 The Third method: Plug the lanport cable to change content.....	18
5 Fault diagnoses.....	19
6 TF LED control card Error code.....	19
7 Attentions.....	21
8 Contact us.....	21

1 Product overview

TF-QE1 support cascade connection,in order to more convenient for all customers' use, **Shenzhen LongGreat Electronic Teachnology Co.,Ltd** created the first video card and ordinary cards using the same software with any partition, colorful outer frame, inner frame, a variety of special effects ,etc ,(include all functions that ordinary cards fully compatible)

Detailed functions are described as follows:

1.1 Function description

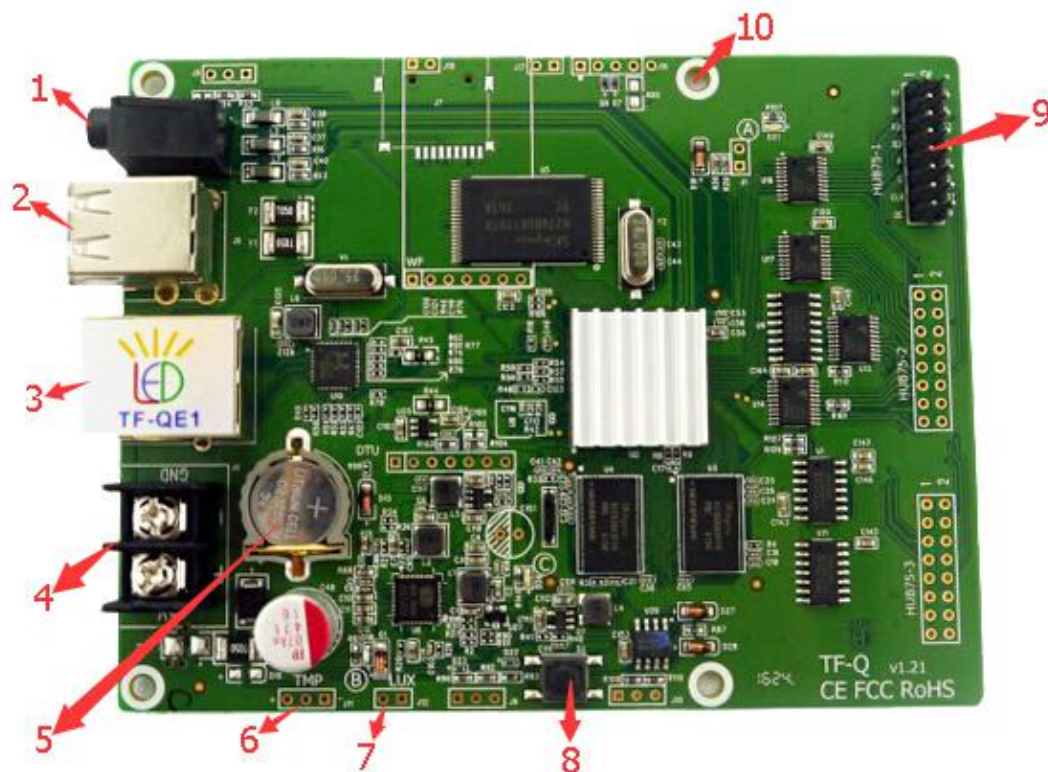
Function introduction	Support multi-partitions, Partition overlap, Video decode,U-disk and Lanport communication,support cascade connection.
Control range	RGB 1536x128 512x384 pixels
Receiver card	Support Lisen receiver card and colorlight receiver card.
Scan type	Support 1-32 scan,depends on the receiver card
Memory	4G byte (support cascade connection)
Video format	MP4、AVI、3GP、RMVB、WMV、MPG、FLV、VOB、MOV, etc.(support most ordinary format)
Picture format	JPG、PNG、ICO、BMP、GIF,etc.(support most ordinary format)
Programs QTY	Max 400 programs,each program support 128 partitions play at the same time.each window support 200 messages(QTY up to control card memor)
Display effect	Rain, fountain, scroll, and other total 45 animation effects.
Colorful border	Support a variety of colorful borders, support custom border effect.
Animation	Support a variety of colorful effects, background animation, support custom background animation.
Message Type	Hypertext,pictures,Video,animation,countdown,timing, temperature,humidity, clock, table.
Play mode	Program support playing in turn,timing play,playing by date,by period,playing by week.
Time display	Clock,time,time with second,support setting the font,time zone,support several time zones play at the same time.
Communication	Lanport communication, Support network automatic search,support U-disk updating programs.
Brightness adjust	16 levels brightness,Support manual adjustment,support 6 period timing adjustment.
Screen switch	Support manual switching,support 2 period timing switching.
Test Key	Test key on control card,can change the test mode to test.
Expand function	Support Temperature and humidity display(add sensor)
Electrical	+5V DC(4.5V~6V),Normal operating power consumption ≤0.5W ,

parameters	when reading the U-disk, power consumption ≤2W.
Working temperature	-30℃～70℃

1.2 Control card size

Item	Value
PCB length	119mm
PCB width	92mm
Horizontal distance of locating hole	85mm
Vertical distance of locating hole	78mm
Locating hole internal diameter	3mm

2 Hardware description



Item	Description
1	Audio terminal
2	U-disk interface
3	Lanport
4	5V DC power supply terminal
5	RTC power supply 3V button cell

6	Temperature & humidity sensor data input interface (From Lanport side,connection in sequence,red cable,yellow cable,black cable)
7	Brightness sensor data input interface (No sequence connecting cable)
8	Test Key (if use together with the power supply,can restore the factory settings)
9	HUB75,used for debugging
10	Locating hole

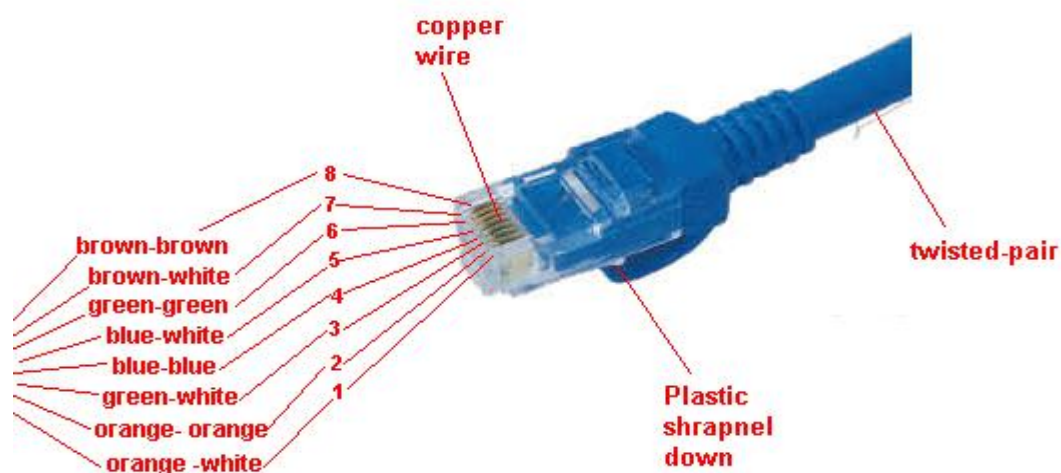
3 Communication interface description

3.1 Lanport description

TF-QE1 Communication interface use RJ45 lanport interface.need connect with computer(router or switch) through lanport cable. Lanport cable has two connections:direct connection and cross connection.TF-QE1 support these two connections.The 2 connections methods description as below:

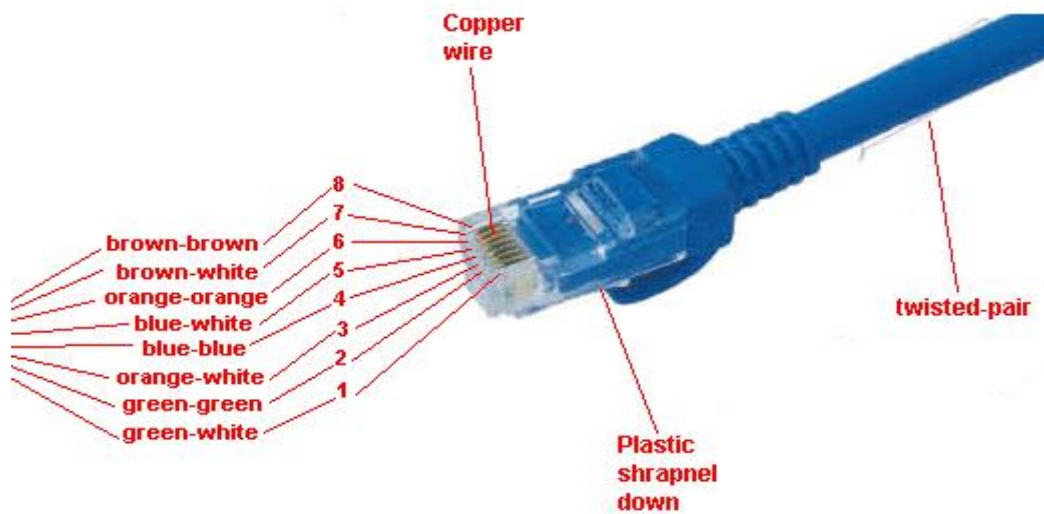
Direct connection——applicable to non identical equipment

Orange-white orange-orange green-white blue-blue blue-white
green-green brown-white brown-brown



Cross connection——applicable to identical equipment

Green-white green-green orange-white blue-blue blue-white orange
—orange brown-whote brown-brown



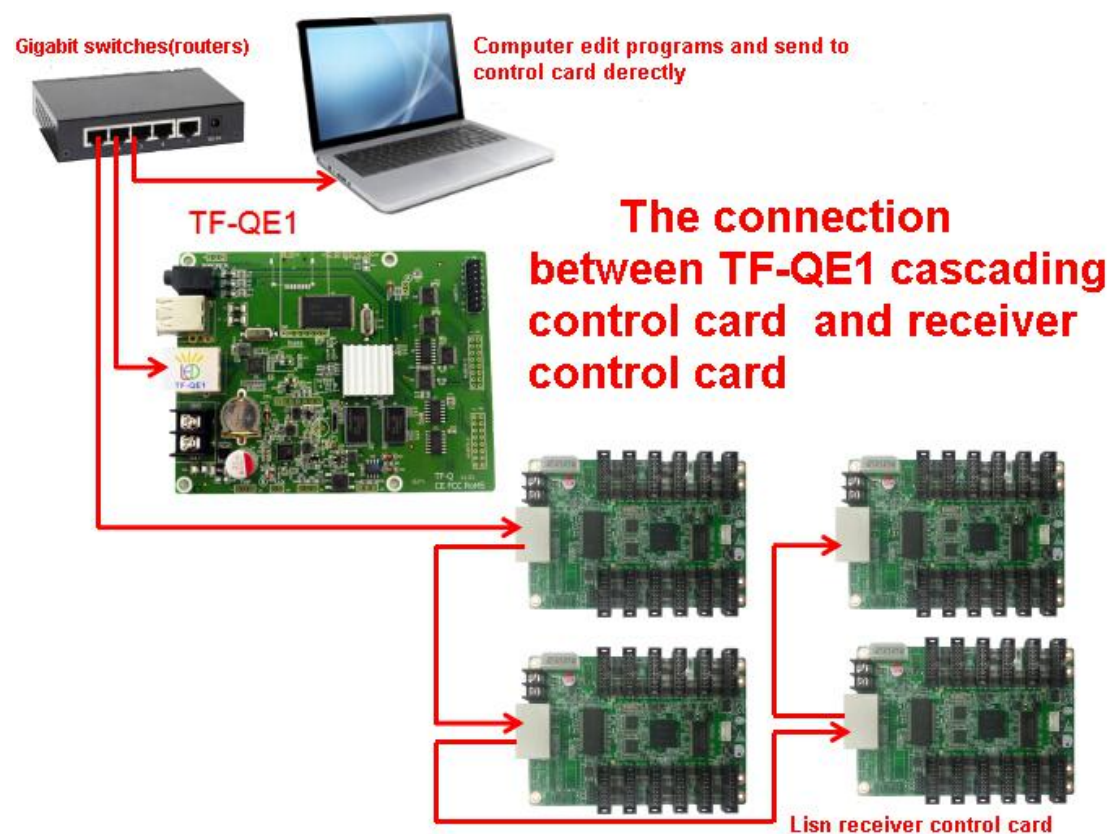
4 Operate steps (You can choose one of the three method)

TF-QE1 cascading control card like a play box,users can take any connections,operate steps as below, user can choose one of the three mothod. First,you need set the receiver control card,please contact the receiver control cards fctory,after receiver control card play normally, you can set the TF-QE1,**steps as below:**

4.1 The first method: Using Gigabit switches or routers

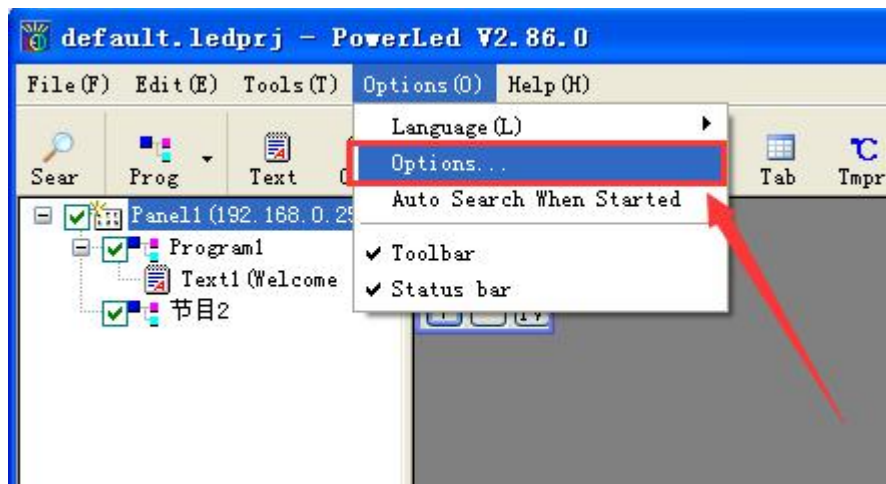
Use 3 lanport cables respectively connect gigabit switches (routers) with TF-QE1,receiver control card(after all seetings,and test good),computer.

Connection picture as below:

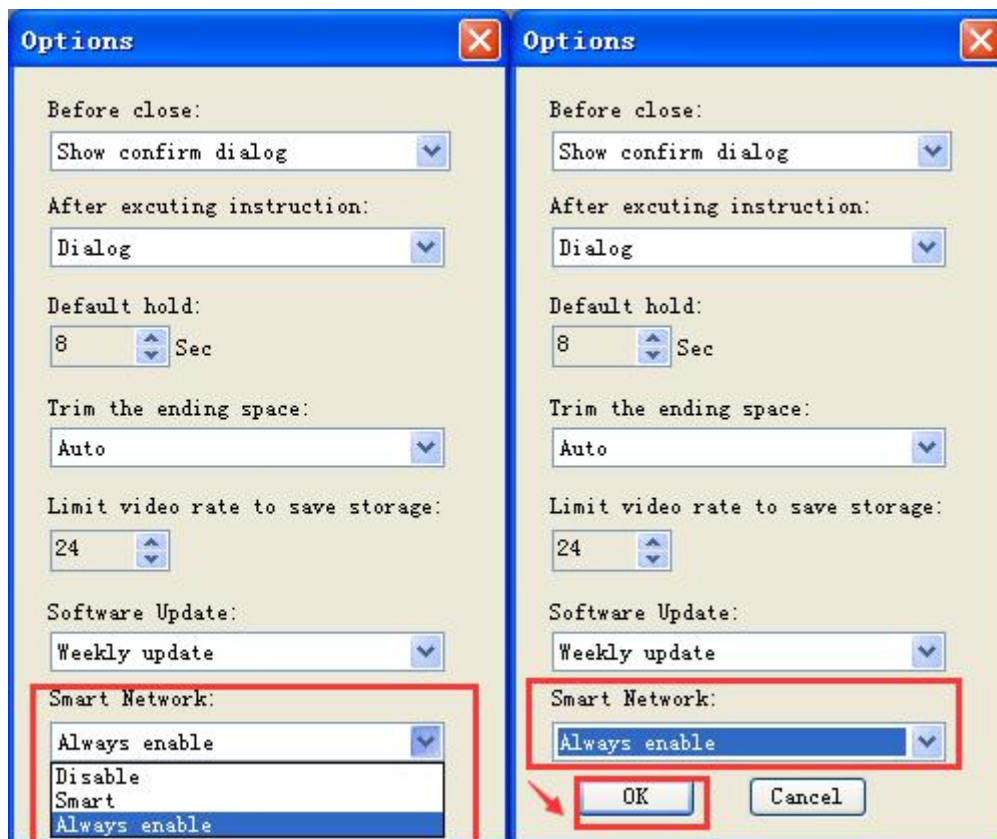


Operate steps as below:

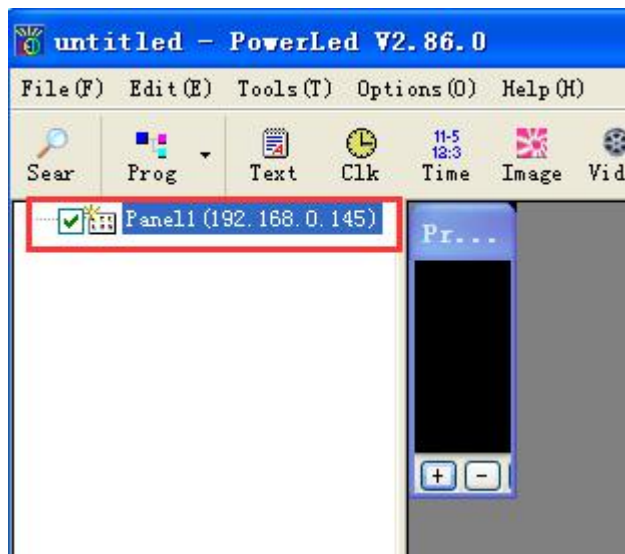
- Open the "PowerLED" software as picture below, click "Options" -- "Options"



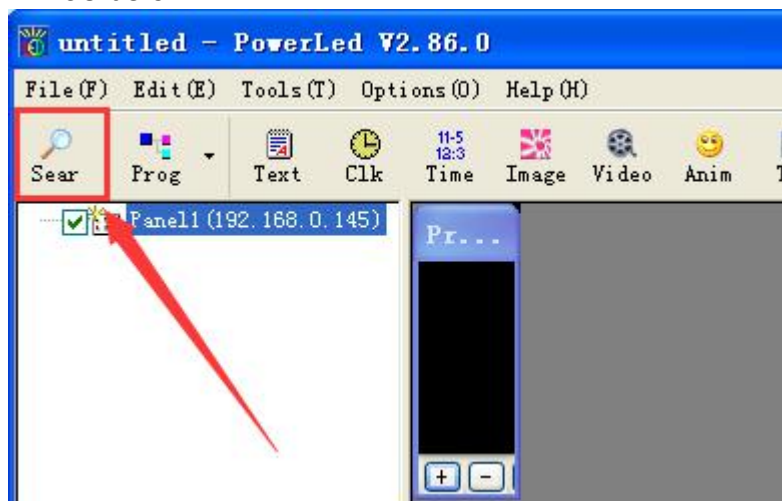
- Enter “Options”, In the “Smart Network”, please select “Always enable”, and click “OK”.



- Software will display the control card IP, and can find that control card.

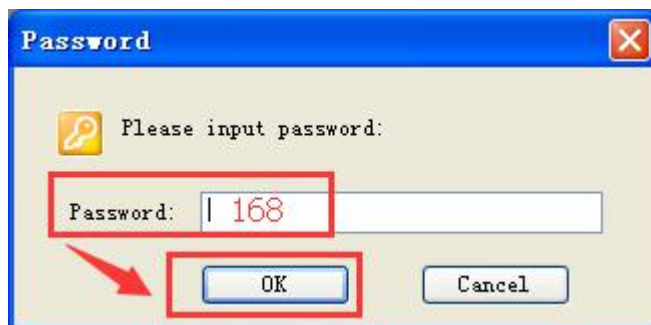
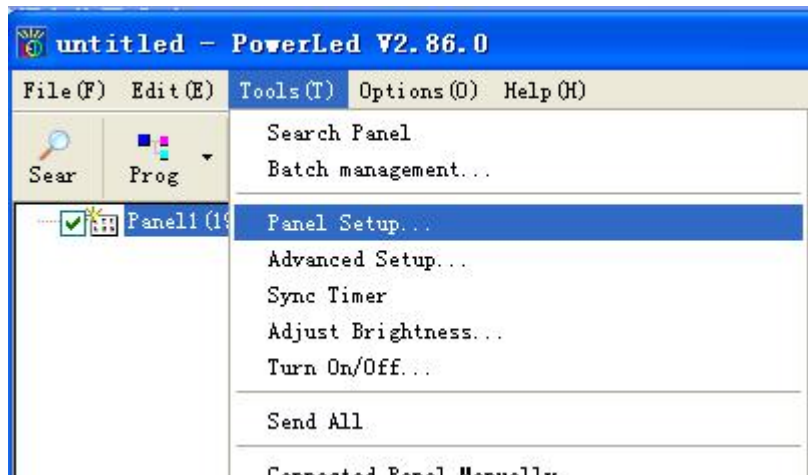


- Click "search", if communicate normal, you will see in the software picture as below:

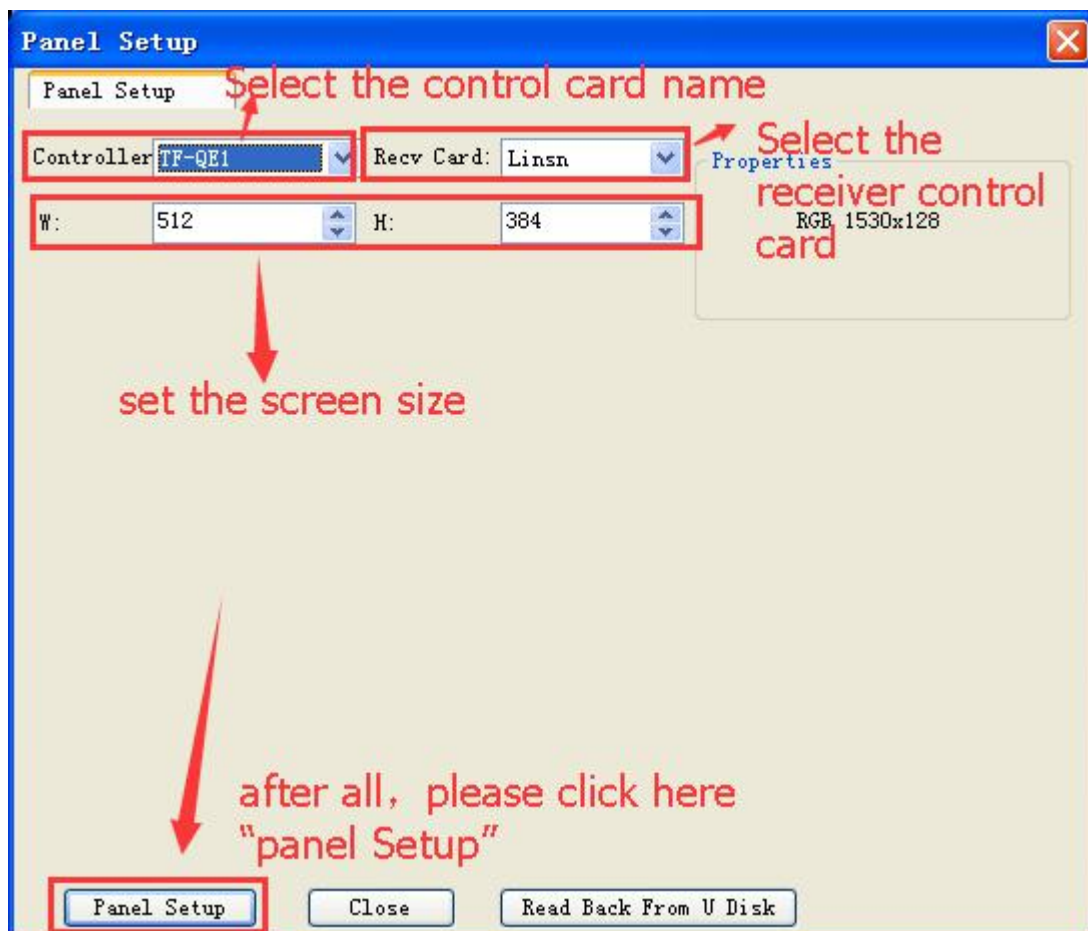


Click "OK"

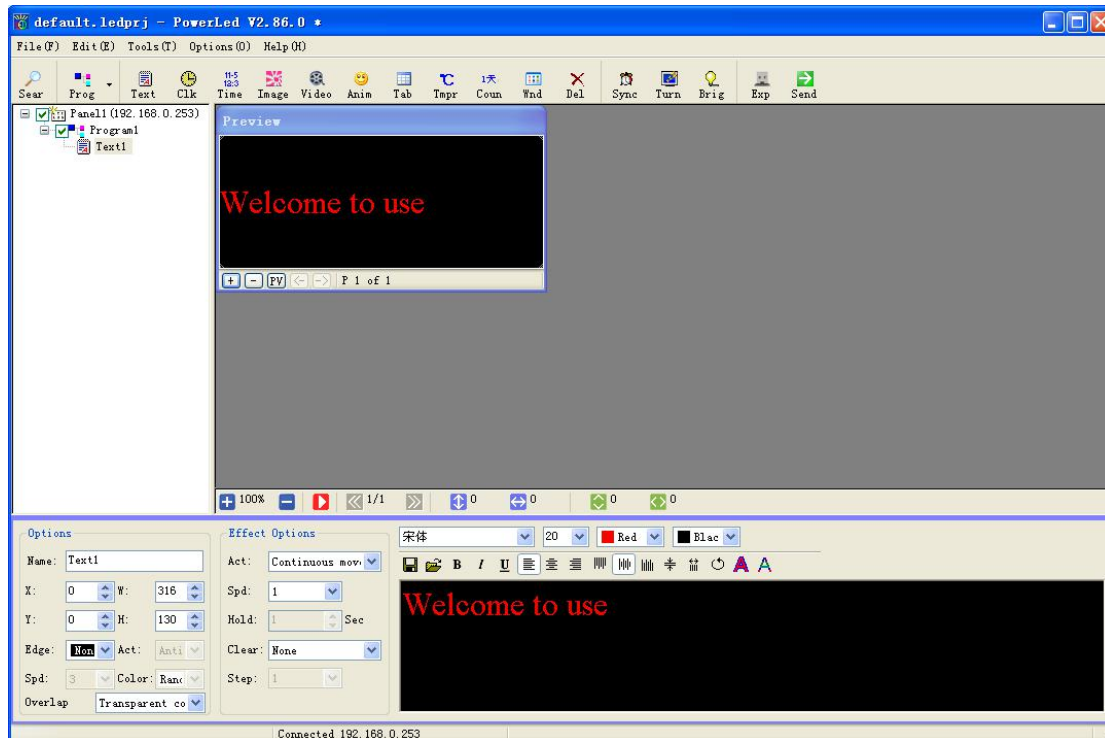
- Enter the "tools"—"panel setup"(password 168), to set the parameter



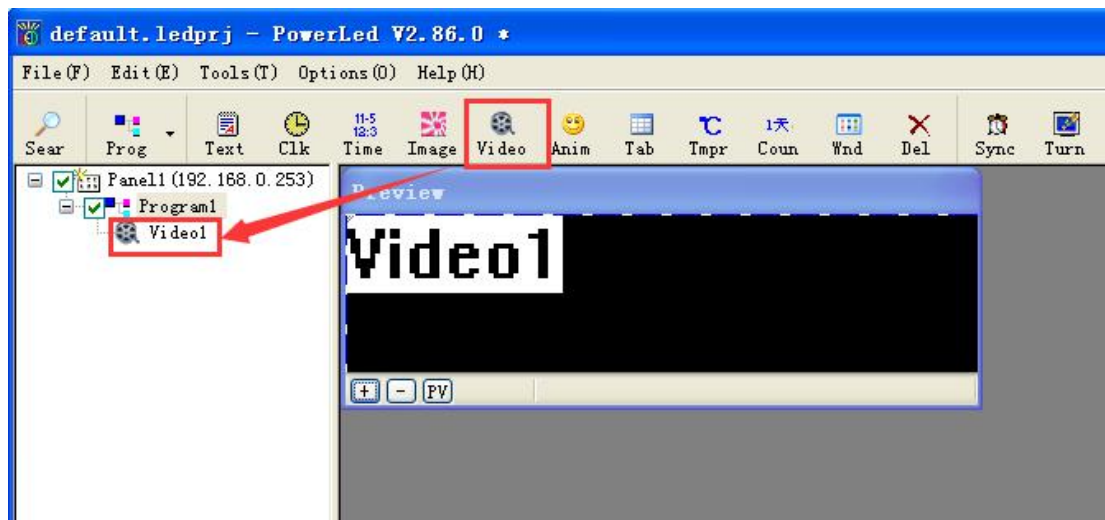
➤ In the "panel setup", description as below:



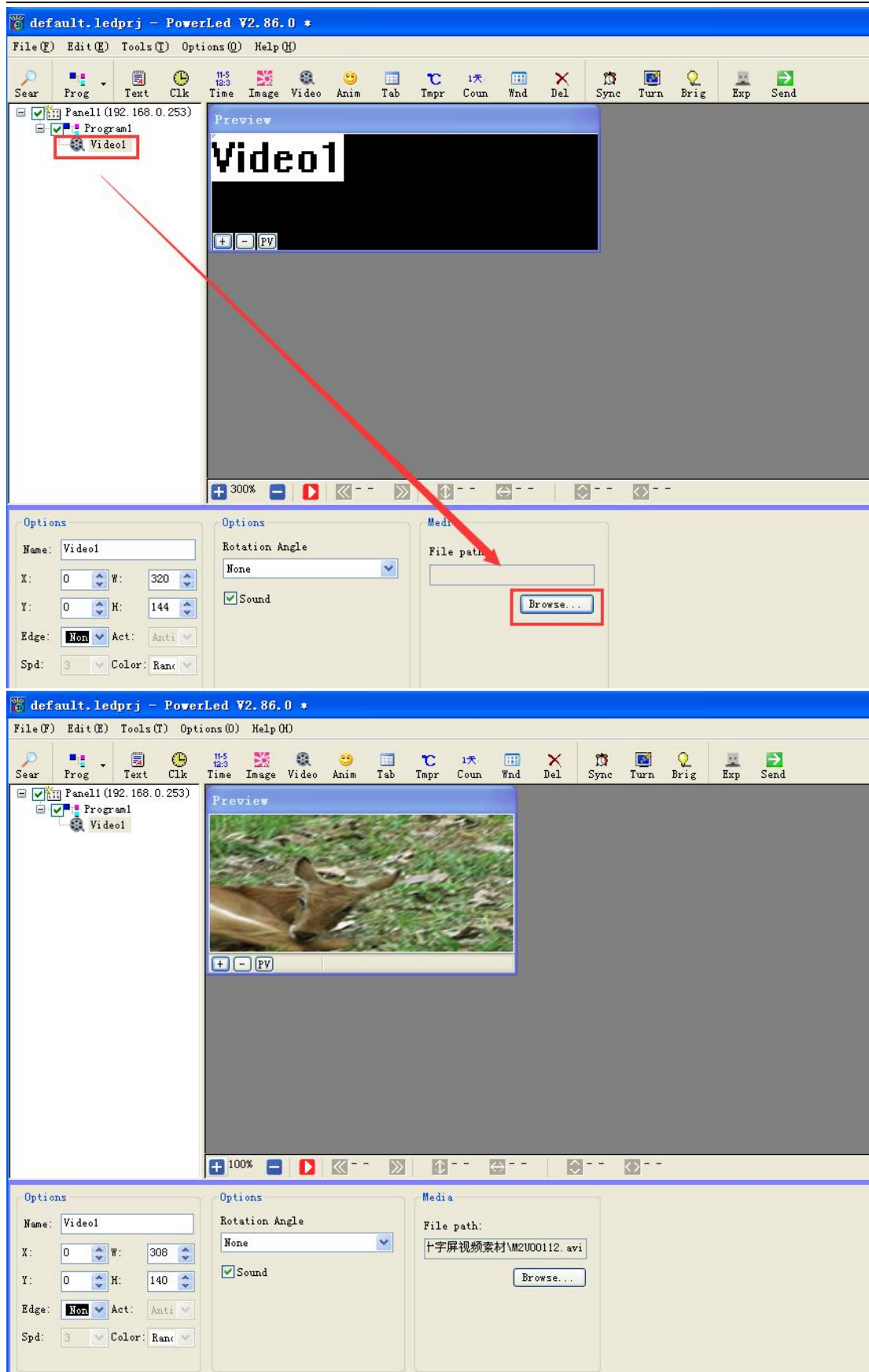
- After click "panel setup", then please click "close", And enter the program editing interface, as below:



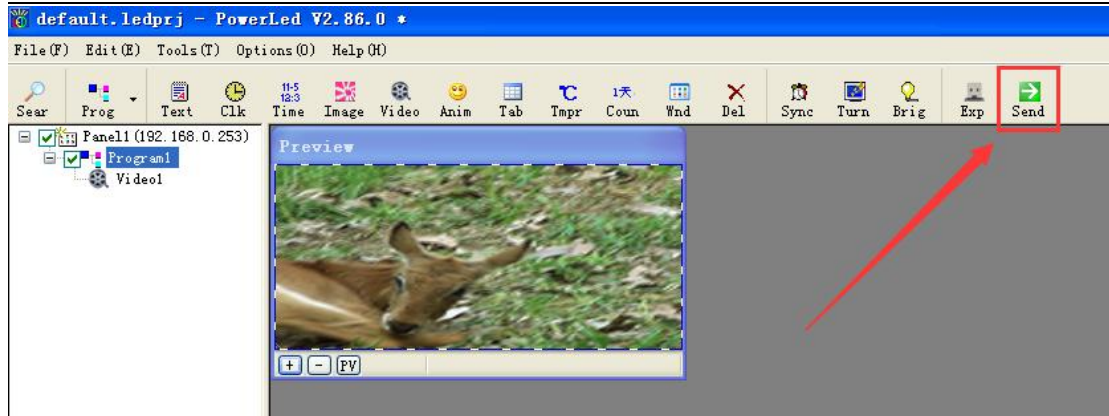
Can add program, Text, clock, etc. Operate same as other normal control cards. As the picture, Click "Video", add the video under the program:



Please Click "Video1", you can see "Browse" in the right bottom of software, and click "Browse" to add the video. Picture as below:

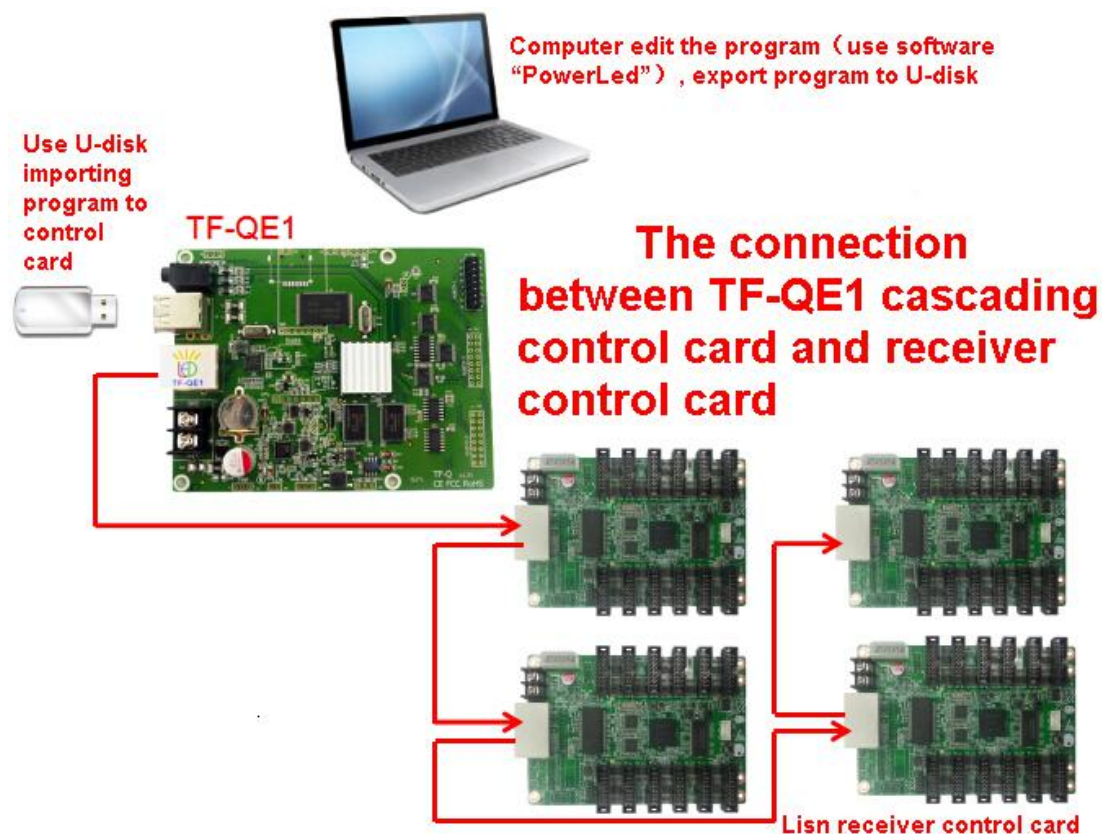


Please click “send”, the LED screen will display that video which you just add.

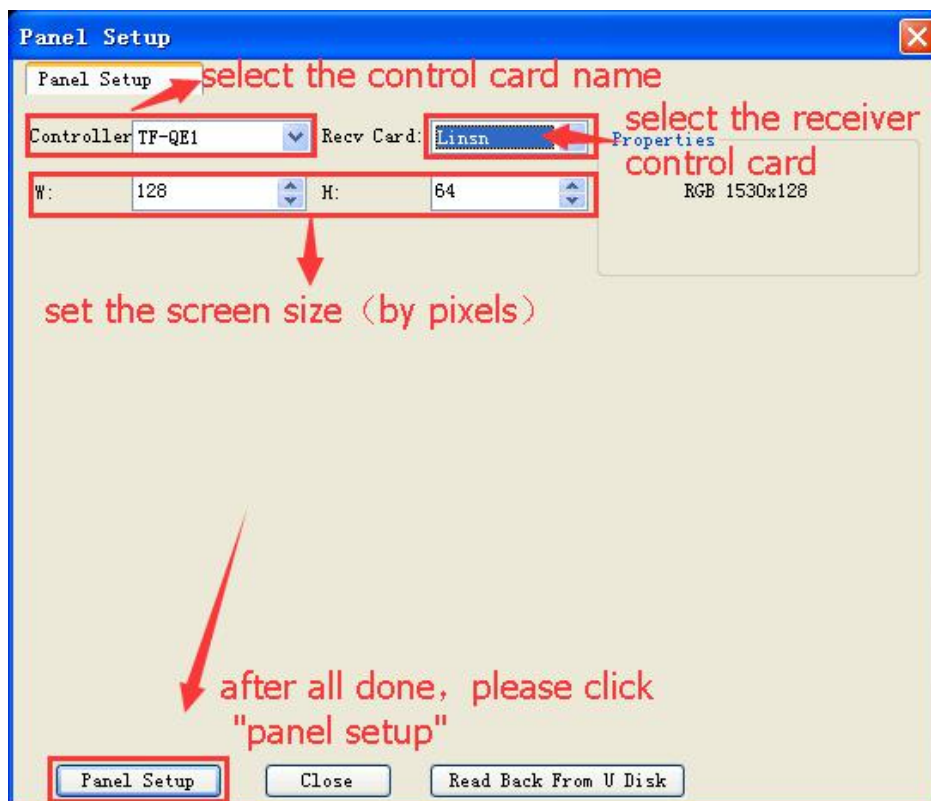
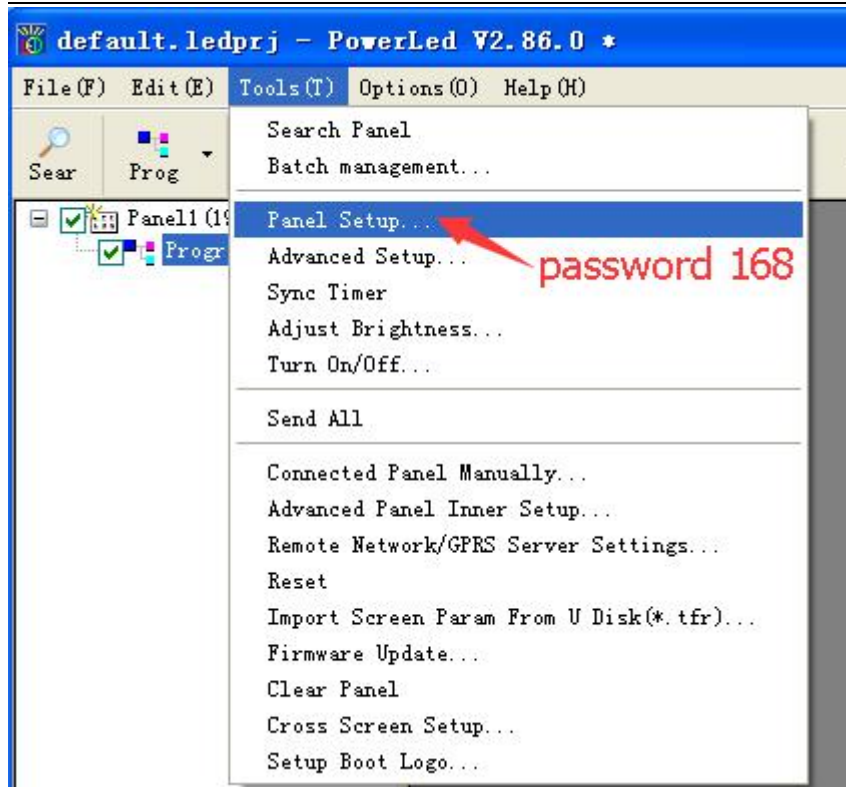


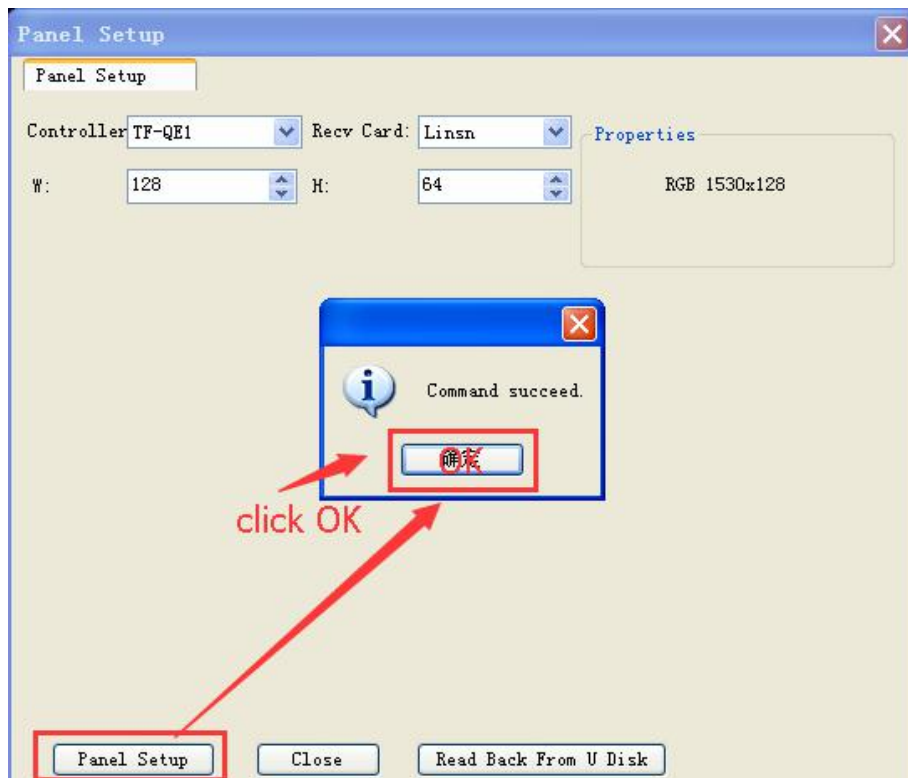
4.2 The Second method: Use the U-disk to change content.

Use the U-disk to change content, the lanport of TF-QE1 connect with the first receiver control card. Connection and operate steps picture as below:

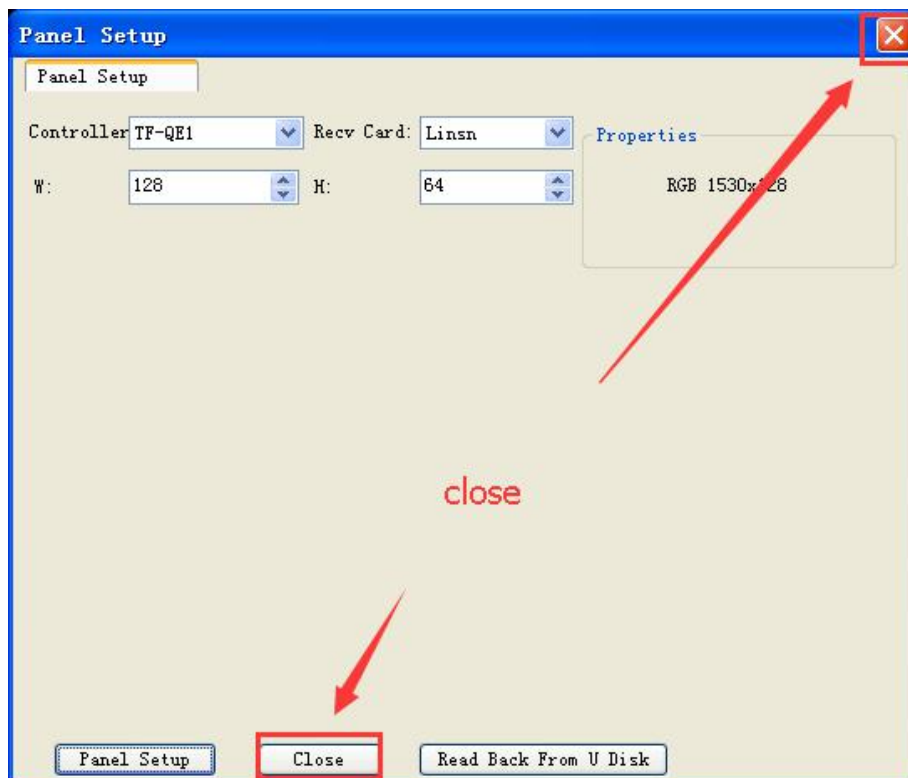


- Open software "PowerLed", enter "Tools" → "panel setup" (password: 168), Settings as below:

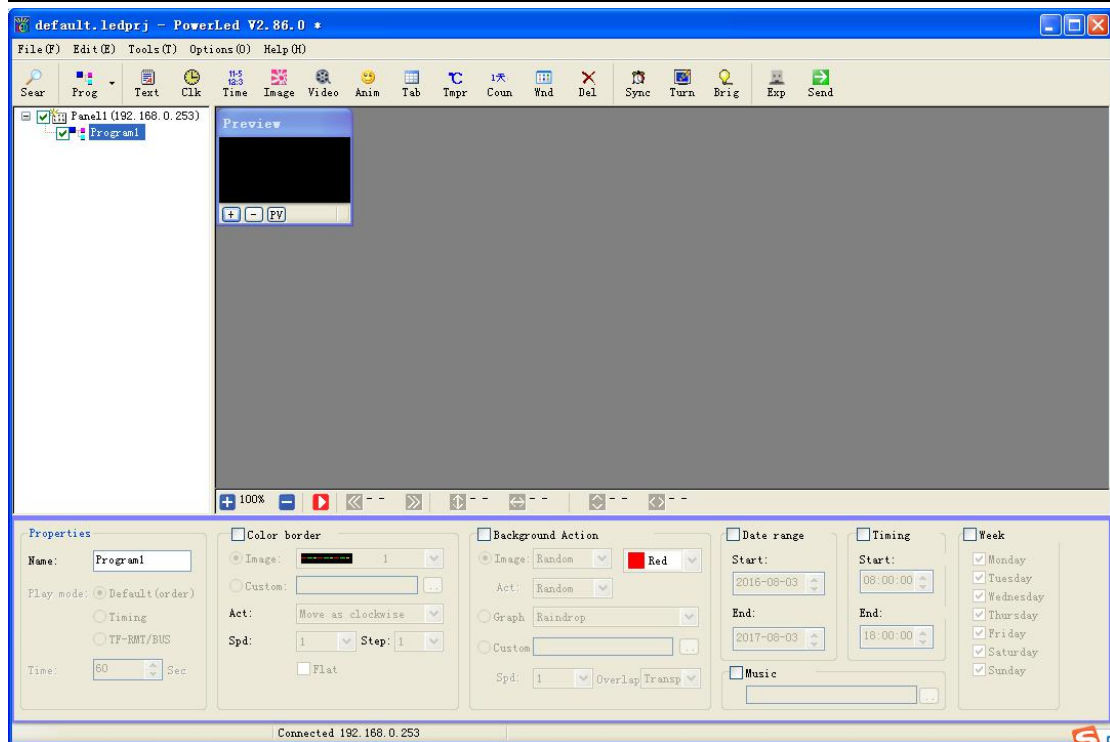




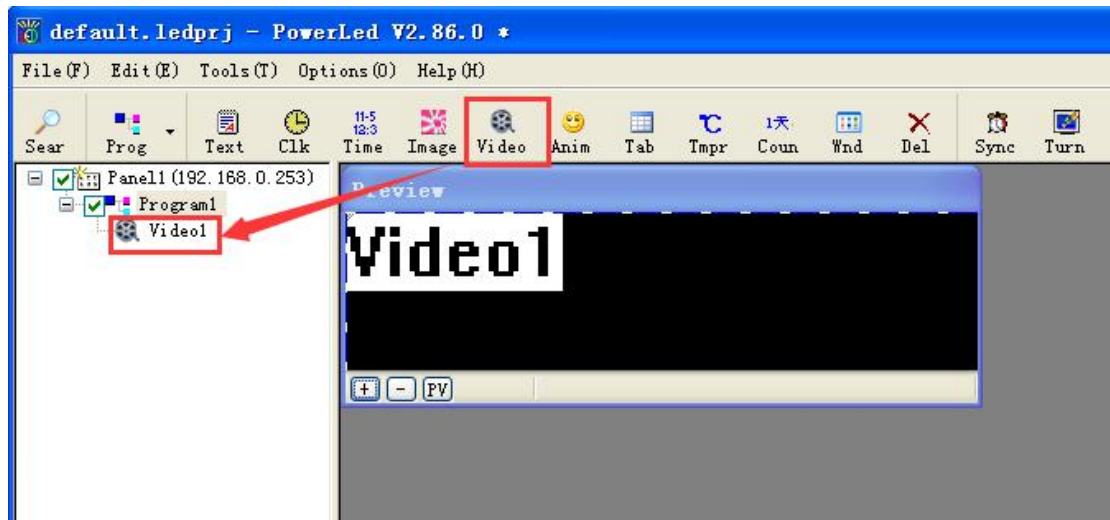
Close the window:



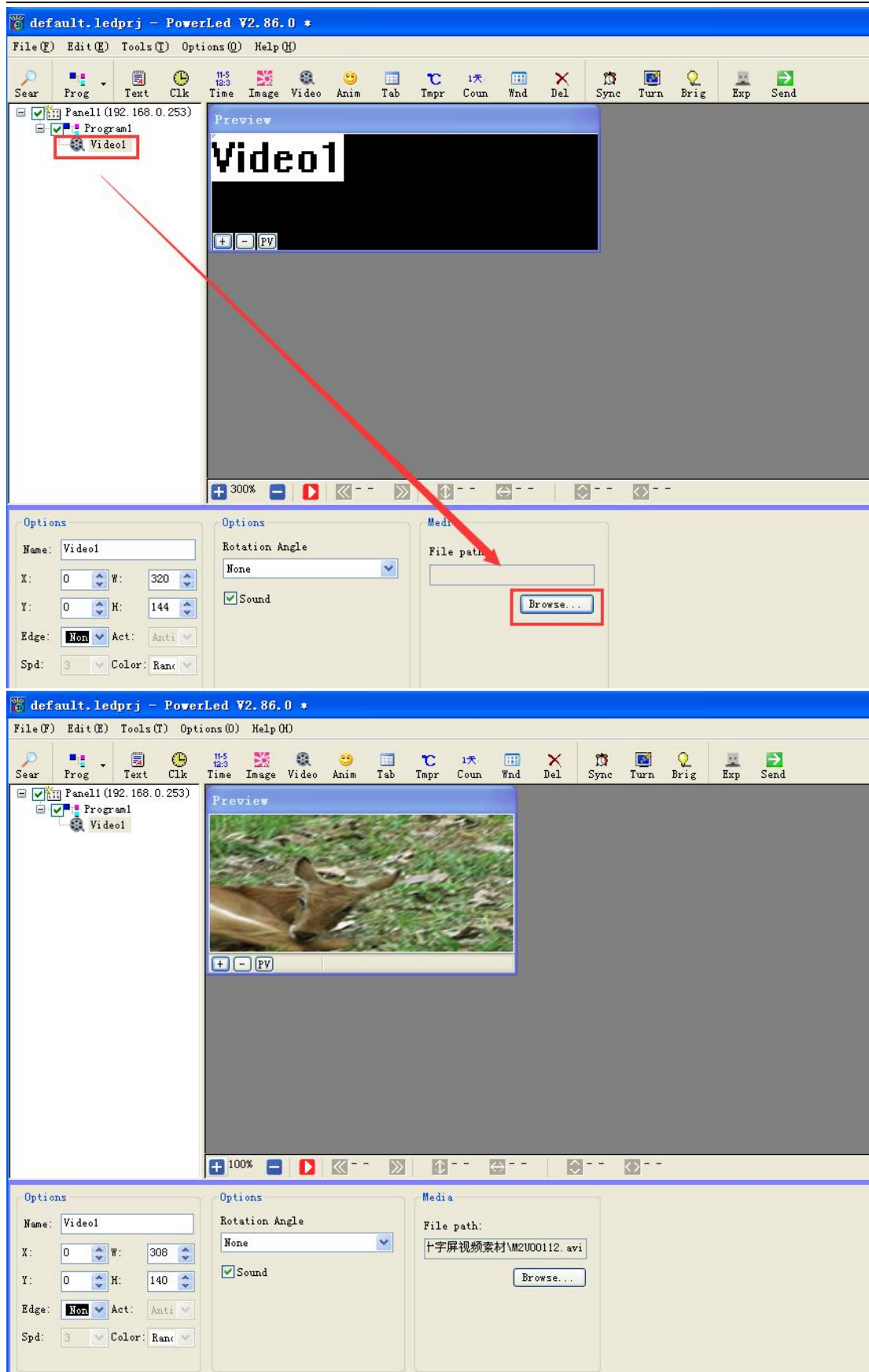
- After click "panel setup", then please click "close", And enter the program editing interface, as below:



You can add program,Text,clock,etc.Operate same as other normal control cards. As the picture,Click “Video”, add the video under the program:

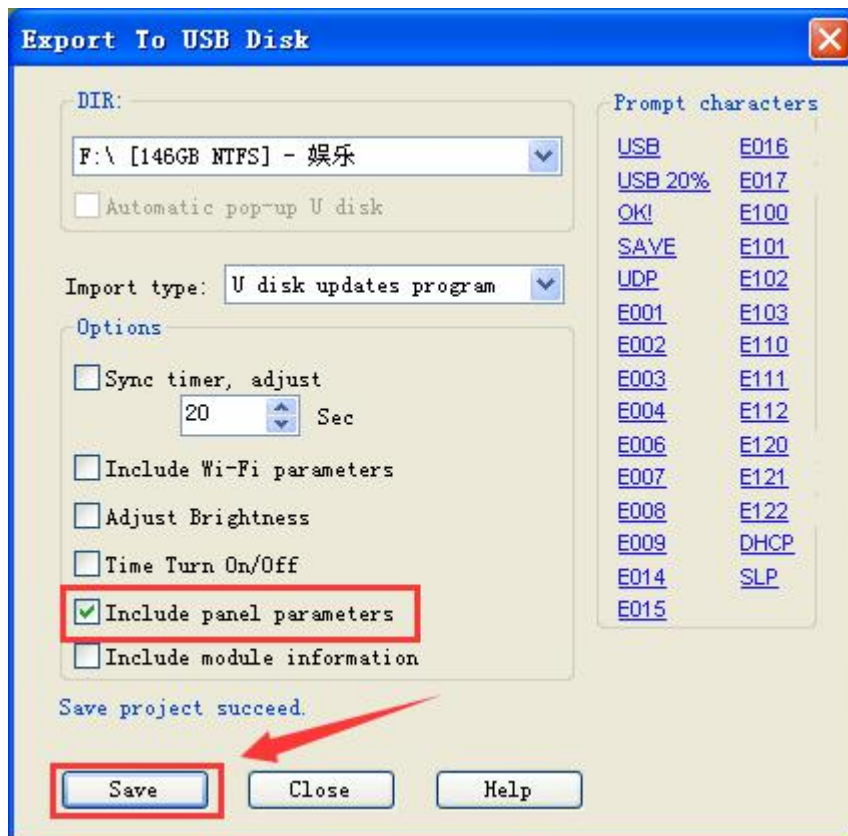
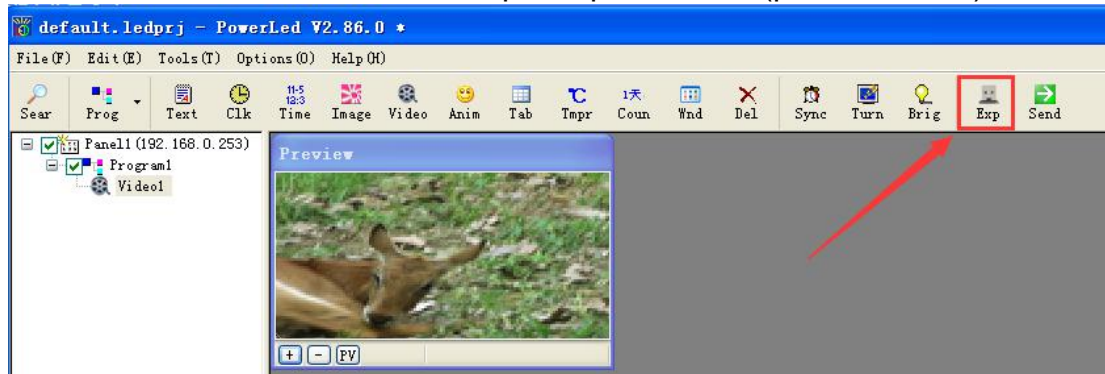


Please Click “Video1”, you can see “Browse” in the right bottom of software, and click “Browse” to add the video.Picture as below:



Please click “Export”, export program to U-disk.

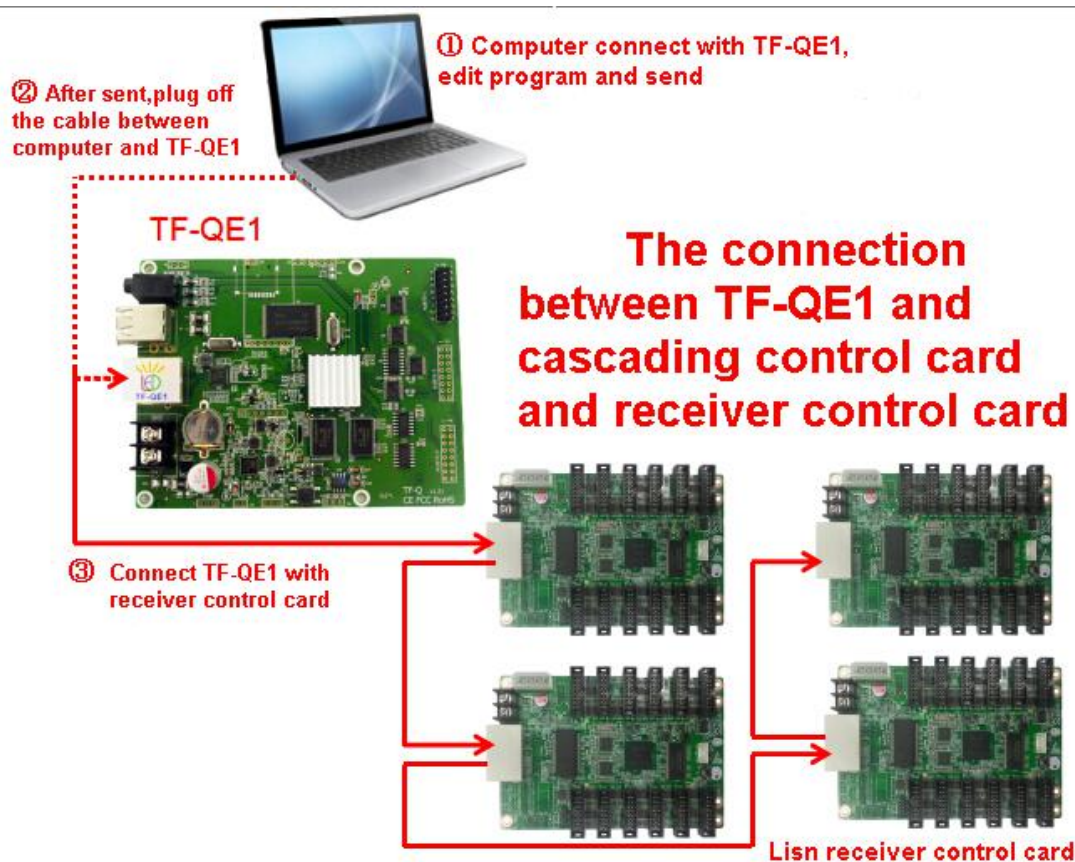
At the first time,need click “include panel parameters”(password 888)



After save to U-disk 100%,please plug off the u-disk,and plug on the control card,after import 100% content,the screen will display the video you just add.

4.3 The Third method: Plug the lanport cable to change content.

First, use a lanport cable connecting TF-QE1 with computer. Use computer (open software“PowerLED”) to edit the program, and send to TF-QE1. Then plug off the lanport cable between computer and TF-QE1, use the lanport cable connected TF-QE1 with receiver control card. Connection and operate steps picture as below:

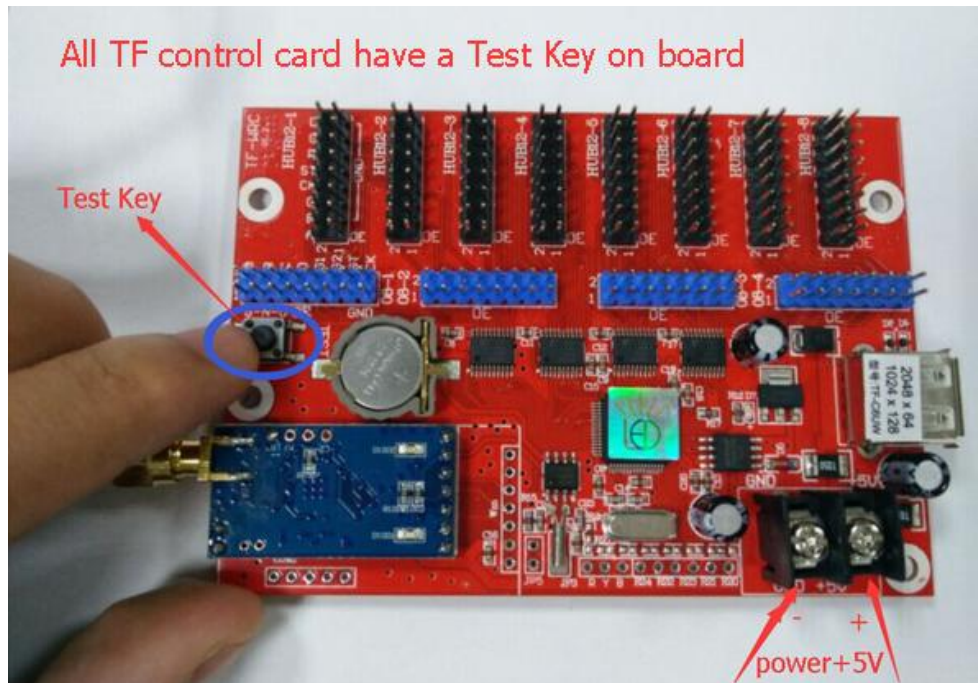


- Use the lanport cable connected computer with TF-QE1, the first step refer to 4.1 (the first method) "search" → "panel setup" → edit the program → Send.
- After sent the program to TF-QE1, plug off the cable between computer and TF-QE1, then use cable connected TF-QE1 with receiver control card. Then the screen will display the video you just add.

When communicate failed, please check connection, and you can restore factory settings:

- Restore factory settings steps:
1. Power on (for control card) → → → → →

- 2.press the"test"key on board,keeping pressing →→→→→
- 3.Power off (for control card,keeping "power off" 5 seconds)→→→→→
- 4.Power on(for control card,keeping "power on"5 seconds)→→→→→
- 5.let your hands off of the "test"key



Original parameters of control card:
ID=1,IP: 192.168.1.252 scan type:16.0

5 Fault diagnoses

- Serial communicate failed, simple fault exclusion method
- Check the power indicator on the control card is light on or not? (Lighting on is normal)
- Check the serial port cable between control card and computer is used cross cable or direct?(cross cable is normal)
- If you used USB-RS232 cable,please check you had install the driver or not?(need install)
- Find my desktop→my computer→manage→ Device Manager
Double click port(COM & LPT),check there is USB-SERIAL CH340(COM3) or not?(here just take COM3 for example)
- The two indicators of the lanport control card lanport terminal,normal condition is: the green lamp is always light on,the yellow lamp is flashing.

6 TF LED control card Error code

All TF cards error code:

Reminder	Type of card	means

USB	U-disk card	Insert U disk detected. This prompt appears if you do not insert U disk, indicating that there is interference, remove or replace the USB extension cable. If you insert U disk appears that prompts for a long time, unable to read the U disk, pls replace or format u disk.
USB 20%	U-disk card	U disk is being read, the percentage is reading progress.
SAVE	U-disk card	Control card is to save the screen parameters into the U disk, so that the computer can read back. If the prompt keep for a long time, that means the U disk,unable to write or write error, pls replace or format u disk.
OK!	U-disk card	Program and screen parameters copy is complete, unplug the U disk.
E004	U-disk card	When use U disk to modify parameters,screen parameters is not correct (screen parameters disorder).
E007	U-disk card	When use U disk to modify parameters, Screen width overstep.
E008	U-disk card	When use U disk to modify parameters, Screen height overstep.
E009	U-disk card	When use U disk to modify parameters,Total pixel beyond the range.
E015	U-disk card	Subarea memory beyond the range,please narrow the subarea,or set the width 64 multiples
E016	U-disk card	Too much programs,is beyond the controller memory. Please delete some.
E100	U-disk card	Have not copy content from U-disk,or some documents missing.
E101	U-disk card	Copy content from U-disk failed, please retry or replace another U-disk.
E102	U-disk card	The U-disk is especial,controller cannot copy ,please format or replace another U-disk.
E103	U-disk card	Unable to open the file allocation table, pls reformat the U disk.
E110	U-disk card	Programs in u disk are not suitable for the current control card. For example,the video card import ordinary card programs or ordinary card import video card programs,screen will appear this prompt. Please select the correct card in the software.
E111	U-disk card	Programs width in u disk does not match the actual screen width, pls use the U disk read-back screen parameters or reset.
E112	U-disk card	Programs height in u disk does not match the actual screen height, pls use the U disk read-back screen parameters or

		reset.
DHCP	Lan port card	Control card is set “automatically obtain IP”, when boot will appear this prompt, means the control card is trying to get IP.
SLP	All cards	The control card had set the timer switch,and arrived off time. If this prompt appear startup time, please check the timer settings are correct or not, the time of the control card and the computer are the same time or not, if inconsistent,pls first calibrate the time.

7 Attentions:

- Please keep control card moisture-proof water-proof sunscreen preparations, to ensure the service life of the control card.

8 Contact us

Address : Room 301-310,Hongdu Business Building A,Shunhe Road East,Bao'an 43rd District,Shenzhen,China

Contact person: Henry Chu

Mobile: +86 15323850528

Email: henry.chu36@yahoo.com

Skype: henry.chu2011

Wechat: henrychu520